

INSIDE:

From the President	Page 2
Lake Clean Up	Page 3
July 4th Fireworks	Page 3
Stream Water Quality	Page 4
FLG & Relicensing	Page 8
Relicensing Update	Page 9
FLG Membership Form	Page 10
2006 FLG Sponsors	Page 11



Important Dates

FLG Breakfasts
May 20
June 17
July 15
August 19
September 16
Grand Summer Social July 29
Annual Meeting August 5

Friends of Lake Glenville

Spring 2006

www.friendsoflakeglenville.com

Howard M. Austin, Editor

Official Announcement: Annual FLG Meeting August 5, 2006 9am Glenville CDC

FLG Summer Raffle Re-deux

Plans are underway for the second annual Friends of Lake Glenville Summer Raffle. Last year's "Great Gift Grab" is to be followed by this season's "Grand Greenback Giveaway". Proceeds from this year's raffle will go to support our on-going legal intervention to Duke's Re-licensing Application as well as related projects concerning erosion, turbidity and boating safety (See articles in this newsletter).

The raffle kick off is scheduled for our first member breakfast of the season on May 20th. Cash prizes will be awarded to this year's lucky winners. First prize is \$5,000, second prize is \$3,000 and third prize is \$2,000 cash. Tickets will be drawn and the winners announced in September. Raffle tickets will be available from members of the ticket committee, the board of directors and from designated merchants in Glenville and Cashiers beginning May 20th. Ticket prices are \$10 each or 11 tickets for \$100. Friends of

(Continued on page 9)

Mountain Musings: Development or Destruction

Howard M. Austin, Editor

As the weather in the mountains of Western North Carolina begins to warm and trees and shrubs flower and begin to leaf out, I have been lucky enough to be here quite frequently to enjoy the off season solitude and tranquility.....when it is not being punctured by the hammering and sawing to build a lakeside club for an off-lake development or the roar of huge dump trucks bringing gravel to what appears to be a new neighborhood development on forty acres above me. I do not know exactly what is happening up there as the

(Continued on page 5)

Lake Glenville Water Quality 2: Counting Nephels

Don Hansen

In the fall issue of the *FLG Newsletter* I presented results from several summers of Secchi disc measurements that indicated deterioration of clarity of Lake Glenville water in recent years. The venerable Secchi disc is a low cost and easy to use instrument for the simple kind of monitoring reported, but has some serious limitations as a quantitative scientific tool. Its measurements are influenced by several factors in addition to the turbidity of the water. Among these factors may be mentioned the elevation of the sun, that is, the latitude of the location and the time of day and year, the ambient weather, the side of the boat from which measurements are made, and the visual acuity of the observer. I have tried to minimize these effects by holding to a standard procedure insofar as possible, but some extraneous variability is inevitable. In addition the method has no application in shallow ponds, lakes, or streams where

(Continued on page 6)



Tools of the trade: Secchi disc (left) and nephelometer (right)

The President's Message Spring/Summer 2006

Carol Adams

As I write this message in early April, the official first day of spring has passed and at the lake we are indeed being teased by spring. Following a "practice winter"..... i.e. a few snow flurries and very few frigid days.....this week skies are Carolina blue and our daytime temps are now reaching the 70's on some days although nighttime continues to be chilly in the 30's.

On the last weekend in February, the FLG Board began serious yearly planning at a board planning retreat. As a result of this planning session wheels have been set in motion on continuing projects and new ones as well.

Of course in 2006 we will continue our very successful activities such as the monthly breakfasts, the summer social, stream and lake water quality testing programs, lake clean-up and a major fundraiser....our annual summer raffle which you will read about elsewhere in this newsletter.

If you receive FLG email, I hope you have heeded the call for FLG slogan suggestions. Crafting a slogan for FLG is one of our first measures to increase FLG visibility. The idea is suggested by one of our newest board members, Richard Becherer, who is a marketing professor at the University of Tennessee, Chattanooga. Thank you to those who responded to the email request. The FLG slogan will be introduced at our first breakfast on May 20th.

On the more serious side of the FLG horizon we intend to become more insistent in our demands on local, state and federal agencies. Our expectations are to hold officials to higher standards for lowering turbidity and sedimentation levels and increasing boating safety. Last fall Doug Odell formed an impressive, talented Lake Turbidity and Sedimentation Team that has already laid out plans and goals for accomplishing action. Shoreline Liaison, David Leach, is creating a committee to study boating safety issues and especially to investigate how increases in 10-slip docks and the resulting increased number of boats on the lake will impact boating safety and frankly the enjoyment of cruising on the lake. Both of these initiatives are in response to numerous comments and requests from concerned members. Reports from these committees can be found in this newsletter.

Our relicensing intervention activity has been minimal since FLG, Jackson County, and other local governments and organizations submitted the Preferred Settlement Agreement to the FERC. All entities involved in relicensing are also awaiting the FERC's Environmental Assessment document that will kick off the next round of comments and hearings. Our attorney Phillip Marston has provided a summary that is included in this newsletter.

We are soliciting help from all members to increase membership. The board is working closely with the membership committee to reach non-member lake and

community. The FLG brochure continues to be available in many locations throughout Glenville and Cashiers. A team of neighborhood captains is being formed and we will sponsor "strictly for membership development" events throughout the summer. Bringing in new members is something each and every one of us can accomplish. Please invite your non-member neighbor to one of our breakfasts or any of our events.

FLG activity interest groups have proven to be a popular new endeavor for FLGers. Quite a few members have selected an activity such as boating, hiking, golf, fishing, cards, etc to participate in with other FLG members. Members interested in specific activities will be contacted by email to form dates and times with each other.

Have you ever seen the FLG website, friendsoflakeglenville.com? It is well worth logging on as webmaster Howard Austin has tweaked the website this year. You will continue to find so much information there about FLG including back issues of the newsletter as well as new lake and membership information.

FLG officers and board are looking forward to another fun-filled and productive year. Please join us at FLG events or activities, join a committee or interest group and above all let us hear from you. All phone numbers and emails are published in this newsletter. See you on the lake!!!

Membership Drive Is Underway

The membership committee has launched a full-speed-ahead membership drive for 2006.

The reason to join Friends of Lake Glenville is very simple. Friends of Lake Glenville is the sole organization that strives to improve and maintain the lake and shoreline not only to protect our property investments but to insure that our children and their children will enjoy the same amenities we do now. It is advantageous for all who live at or around the lake and even those who only use the lake to join FLG.

High membership numbers enhance our influence on all of the agencies and officials we encounter as we press forward for improvements to and upholding of current practices for water quality, shoreline use, boating safety and general lake amenities.

The names of neighborhood captains will be announced soon as well as membership development events. Captains will have membership information available for neighbors and at the membership development events attendees can learn all about FLG.

As a current member won't you help by bringing a friend of neighbor to a breakfast...the third Saturday of May through September...or provide an application or brochure for a non-member? Information brochures can be picked up at places like the Glenville and Cashiers Post Offices, real estate offices, the Albert Carlton Library and many shops and retail businesses throughout the community. Or, of course, call any board member.

LAKE GLENVILLE CLEAN-UP

Saturday, June 24

Come and Join in the Fun!

Where to

Clean: Wherever you see trash or debris, most importantly any logs, brush or other materials in boating lanes. The Clean-Up will last from 8:00 a.m. to 1 p.m.

What can

be removed: Only trash or debris that can be loaded onto your boat and which is not attached to the shoreline. PLEASE do NOT tow anything to the ramp. Hazards of this size should be marked with a surveyor's flag or other bright material and brought to the attention of Dale Mosteller, the Duke Lake Manager; he will arrange to tie it these hazards off to the shore or you can tie them off yourself. Small trash

should be bagged in plastic bags.

Where to take

Trash: To the ramp on Pine Creek Road where there will be people to help remove it for you; or you can remove it yourself and place it to the left of the ramp right next to the steel gate.

Lunch:

For those who participate in the clean-up, lunch—courtesy of the Friends of Lake Glenville—will be served from 1 p.m. to 3 p.m. at the Pavilion on Buck Knob Landing. Please call Jackie Wertymyer at 828-743-1116 by June 19th to reserve your seat at the lunch. Feel free to come by boat or car.

July 4th Fireworks

Fireworks planned for Monday, July 3rd on the lake. Like last year, the fireworks will be set off from Perimeter Pointe at sundown around 9:15pm. Stuart Hall and his supporters will be setting them off as usual and we thank him and his team again for their generosity and hard work. Full details will follow at FLG breakfasts and on the web. Any contributions on top of the contribution FLG makes every year to defray some of Stuart's costs should be either in cash or by check to Stuart Hall and should be given to any FLG Board Member who will make sure the funds are forwarded on to him.

Boating Safety Courses

As most of you know by now, in order to operate a personal watercraft on the waters of North Carolina, the N.C. General Statutes require that anyone between the age of 12 and 16 years of age must complete a NASBLA approved Boating Education Course and carry a certification card and proof of age. There are two ways to do this:

Attend a Boating Certification Course in person
Pass an on-line Certification Course

In both cases, do the following:

- Go to the website—www.ncwildlife.org and check the *Boating/Waterways* bar on the left hand side [For those who would rather navigate the site themselves, don't read any further; for those who would like a blow by blow, I have added step by step instructions below]
- Select *Boating News* from the top bar
- Select *Register for a Boating Education Course on line*

To register for the course in person:

- Go down to the *Registration* section under *Instructor-Led Courses* and select *Jackson County* from the pull

down list and hit the *Request List* button.

- The list of current courses will appear—there are currently two, one on 5/15 at Cullowhee (location as yet unspecified) (828-631-1988), starting at 6pm for a 2 day course, speak to Mike Johnson, and one on 6/13 at Lauada at the S.W.C.C (828-488-0117) at 8 (unsure whether am or pm so do call) for a 1 day course. Speak to Brian Cookston.
- If you wish to register, select the course and call the number given above to register.

To Sit and, hopefully, Pass an On-Line Certification Course:

- Go to the bottom of the screen and select *Boat-ed.com* under *OnLine Courses*
- This will take you to the Boat-ed.com website where you can then study for the course and take it at your leisure for \$15 (the in-person course is free, provides personal attention and there is no exam). You must score 80% to pass and your certificate takes 5 to 7 days to arrive. There is no limit to how many times you can take it but you do have to pay each time!

Let's all help to keep Lake Glenville as safe and beautiful as ever.

See you on the Lake!

David Leach, Chairperson Boating Safety

Water stream quality monitoring for Lake Glenville

Sandy Bishop, Water Quality Chairperson

It is not news to anyone who has been on Lake Glenville for the past 10-15 years that the quality of the water has deteriorated over the years. Data collected for water clarity in the lake over several years time by Don Hansen has demonstrated that visibility in the water at the surface has declined from 16-18 feet in 1999-2001 to 5-8 feet in 2004-2005. The causes of this loss in water clarity are variable, and include sediment inflow to the lake from major streams feeding the lake, variable lake levels causing shore erosion, increased development in watershed areas surrounding the lake, increased boat traffic and possibly algae blooms in the lake water.

Concern about the quality of water in Lake Glenville prompted the Friends of Lake Glenville to start a monitoring program of the streams entering the lake starting in June of 2000 in conjunction with the Environmental Quality Institute at the University of North Carolina at Asheville. With the early efforts of Doug Odell, Sam Lupas and Bill Lindquist, water samples have been collected from seven major streams entering the lake and up to now, over 5 years of data have been collected, providing a baseline for monitoring any future alterations. Currently the collection team consists of Sandy Bishop, director, and able assistants Sam Lupas, Mark Pentracosta, Bill Johnson, Pat Strickland and Karen Scarborough. Water samples are collected from the seven stream sites at the end of each month and taken to the testing laboratory in Asheville. Additional volunteers would be welcome to assist in the collection of samples and transport to Asheville; please call Sandy Bishop, 743-1620, if you are interested in becoming part of the team.

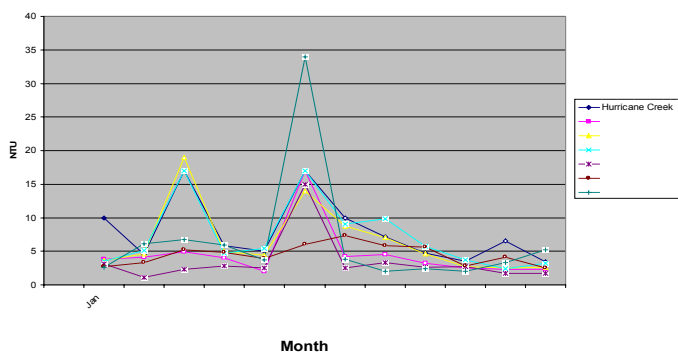
The water samples are tested for a variety of substances, including: turbidity, and total suspended solids (both indicators of water clarity and suspended particulate matter); acidity (pH) and alkalinity (which may indicate effects of acid rain – pH – or other specific discharges); conductivity and heavy metals – copper, lead, zinc, (which are a measure of domestic wastewater or agricultural or highway runoff); and nutrients – Orthophosphate, Ammonia Nitrogen and Nitrate/Nitrite (which may indicate natural plant, sewage or agricultural runoff). Water flow is monitored at area streams and the results of any single sampling must take into consideration high water flow due to heavy rains. In general, the streams entering Lake Glenville are among the cleanest in the region, and generally rank very close to the average of strictly forested streams. Occasional high levels not related to recent very heavy rains will serve as a warning that specific activity along stream beds needs to be monitored and evaluated.

As shown in the accompanying figure for turbidity data collected during 2005, the NTU (nephelometric turbidity units) is generally within the 2-7 units range except in the months of March and June when samples were collected immediately after very heavy rainfall. Among 217 Western Carolina streams currently being monitored by the UNCA laboratory, our streams all fall within the top 67 streams for all variables measured.

Factors playing a role in the increasing turbidity noted in Lake Glenville over the past several years include sediment in streams from runoff from developments some distance from the lake. This is especially true during periods of high rainfall, such as experienced during the Fall of 2004 and the Spring of 2005. Development around the lakeshore and adjacent areas is also a major contributor to lake sediment. Other major factors include varying lake levels, especially high levels resulting in bank erosion, and increased boat traffic.

The possible role of algae blooms is unclear. The major developments which drain into the lake are regulated and monitored. There is less strict regulation and very little monitoring of individual home development around the lake, and in the aggregate, these constitute a major contribution to lake sediment. To assist the county in regulation of such sites, individuals noting problems should contact Robbie Shelton, Erosion Control Officer, at 631-2261.

Turbidity 2005



FLG Receives Grant from Local Business

Highland Hiker, a long time local vendor of outdoor gear and clothing, participates in a grant program titled *One Percent for the Planet*. Each year they and other businesses throughout the nation earmark 1% of net sales as donations to organizations that protect the environment. For 2006 Carol and David Wilkes, owners of Highland Hiker, have designated *Friends of Lake Glenville* as one of the recipients of their 1% donation to the environment. Grant monies we receive will be used particularly for our increases in spending for projects to control turbidity and sedimentation. We thank the Wilkes's for their generous contribution to FLG.



Lake Turbidity and Sedimentation Team Springs into Action

The Lake Turbidity and Sedimentation Team, LTST, has compiled a resource list for members to use for contacting an official or agency. It is not unusual for returning property owners to find or observe something that needs the attention of a specialist. The list provides the names, phone numbers and email addresses (where available) for many agencies and officials as well as the LTST members.

In addition to compiling the officials list the LTST has assembled a list of data relating to turbidity, erosion and sedimentation in order to determine what data information exists and what data is needed. If you would like to refer to any existing data, copies of the documents can be obtained from the agency or department involved or from any member of the LTST.

Both lists will be posted on the FLG web site or can be obtained by email from Doug Odell or Carol Adams. Space permitting, they may also be published in a future edition of this newsletter.



Signs of winter: A barge and push-boat (below) travel north on the lake toward the dam, past one of the islands slowly shrinking in size due to shoreline erosion. Taking advantage of the lake's lower levels during the winter (opposite left), a homeowner is building a sea-wall to reduce shoreline erosion. A new dock (above) goes in as the lake comes up.



Mountain Musings, continued

(Continued from page 1)

road is chained off and the trees on either side peppered with "No Trespassing" signs. Two articles in this issue of the FLG newsletter detail the degradation of the water clarity and quality Lake Glenville used to enjoy and speculate on its causes.Mother Nature or human activity or a combination of both, nature compounding people's miscalculations or deliberate misdeeds. Previously picturesque mountain vistas of dense forests are now interrupted by clearings containing homes much larger than historically seen anywhere in the mountains outside of an elite Asheville or Atlanta neighborhood. Anecdotal evidence suggests a massive proliferation in large (ten slip) docks this season, for neighborhoods largely contiguous to the lake but increasingly for large developments miles off the lake. Hard facts are hard to come by, assumeably because the applicants for all these docks want as little publicity as possible to avoid alerting any opponents and have their plans debated or rejected.

Is this why any of us originally visited the mountains and decided to settle here, either part time or permanently? If so, I personally could save some gas and just stay in Atlanta and watch the Chattahoochee turn an opaque deep brown after every rain and know that any fish I caught were inedible due to pollutants and toxins in their flesh, or I could watch the "McMansions" replace 60's bungalows, or I could watch huge apartment or townhouse developments encroach on the national forest or river corridor.

Do I think development will be stopped or curtailed any time soon on and around Lake Glenville? Do I think the development that does occur will be thoughtful, with respect for the natural beauty and rich history of this area? Can we expect the increasingly more powerful boats cruising the lake to consider what their wakes are doing to exacerbate shoreline erosion and slow down or move further away from the shoreline? Can we help our Duke Energy lake manager discourage folks from clearing the shoreline of native plants to leave mud to wash into the lake or plant a lawn more appropriate to the suburbs than the mountains? Sadly, I fear that the honest answers to those questions are likely to be "No".

What can we do if we want our children or grandchildren to come to know the beauty and solitude of the mountains? Stopping development is unlikely to happen. No one is going to pull up the drawbridge now that we are safely in the castle. We must learn to live symbiotically with our fragile mountain world, preserving forests with smaller house footprints and less clearing around them, replanting cleared areas, especially shoreline, with native plants, having narrow curved paths down to our docks instead of wide straight slashes down to the shoreline, and thoughtful responsible boating habits to reduce shoreline erosion, among dozens of small efforts that could collectively have an enormous effects on our habitat here and allow us to continue development and still preserve the mountains for the newcomers, the old-timers, and future generations.

Lake Glenville Water Quality 2: Counting Nephels Continued

(Continued from page 1)

the Secchi depth is greater than the depth to the bottom, to waters below the Secchi depth, or to individual samples from a domestic water supply or an industrial process.

To fill these needs instruments called turbidity meters, or nephelometers from the Greek word *nephelē*, meaning cloud, are used. Because much of the information to be presented in sequel will be based on nephelometer measurements, some description of the device is appropriate (see photo). Like the Secchi disc, nephelometers measure optical properties of the water, albeit with greater consistency. A small sample of water is inserted into the instrument and illuminated by a beam of light. The intensity of light that passes through the sample is measured, as is that which is scattered at 90° to the direction of the beam by particles in the water. The ratio of these two intensities is calculated and reported as nephelometric turbidity units, or NTU. NTU are scaled to approximate numerical equivalence with the mass concentration of suspended solid material in milligrams per liter. Optical properties of the suspended material matter for this scaling; it can be easily understood that suspensions of clay particles or mica flakes will have different optical properties than that of coal dust. The approximation is quite accurate for the major streams flowing into Lake Glenville; data for lake water are too few and too variable for a quantitative result.

limit for discharges into natural waters in North Carolina.

Although the Secchi disc and the nephelometer both measure optical properties of water, they are obverse measurements. The Secchi disc measures the clarity of the water, and the nephelometer measures the cloudiness of the water. I have been taking samples at 10-foot depth intervals at several stations on the lake since summer 2003. Figure 1 shows 154 Secchi depths in comparison with the NTU values of surface water samples taken at the same time. The obverse relationship between Secchi depths and turbidity measured in NTU is readily apparent. Large turbidity values correspond to small Secchi depths, and conversely. It is apparent also that during the past three summers the preponderance of Secchi depth measurements have been in the range of 5 to 10 feet and turbidity values have been mostly in the range 1 to 3 NTU. Nearly 10 percent of the observations have exceeded the water sports safety criterion of 5 NTU and a few exceeded the trout criterion. Also, in Lake Glenville the water sports safety criterion of 5 NTU corresponds to a Secchi depth of about 5 feet. There is quite a lot of variability of Secchi depths at various values of turbidity because these turbidities were from surface water samples while Secchi depths are influenced by subsurface water as well and turbidity can either increase or decrease with depth as will be shown subsequent articles.

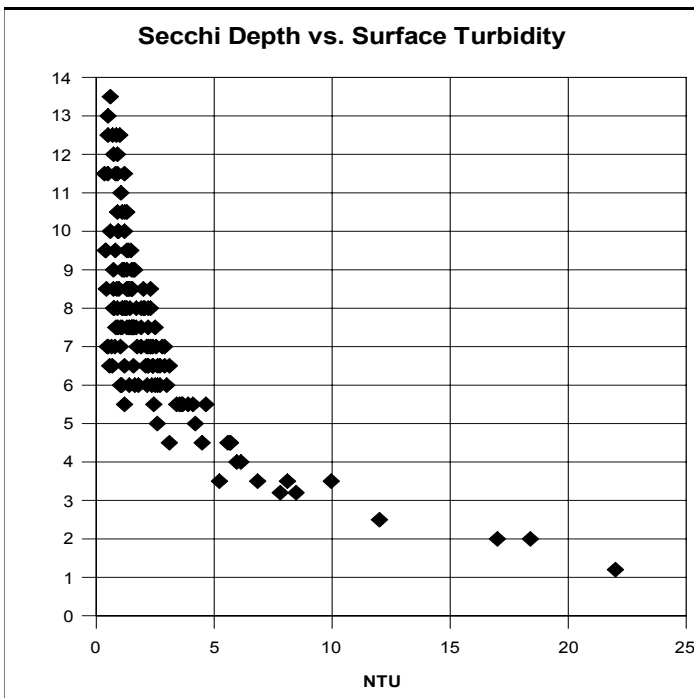


Figure 1. Relationship of surface sample turbidity to 154 Secchi depth measurements in Lake Glenville during 2003-2005.

Some benchmarks: source waters with turbidity greater than 1 NTU typically must be filtered for use in regulated public water systems; 5 NTU is considered the safety limit for water sports, for fear of striking unseen underwater obstructions; the upper limit for trout propagation is 10 NTU; and 25 NTU is the legal

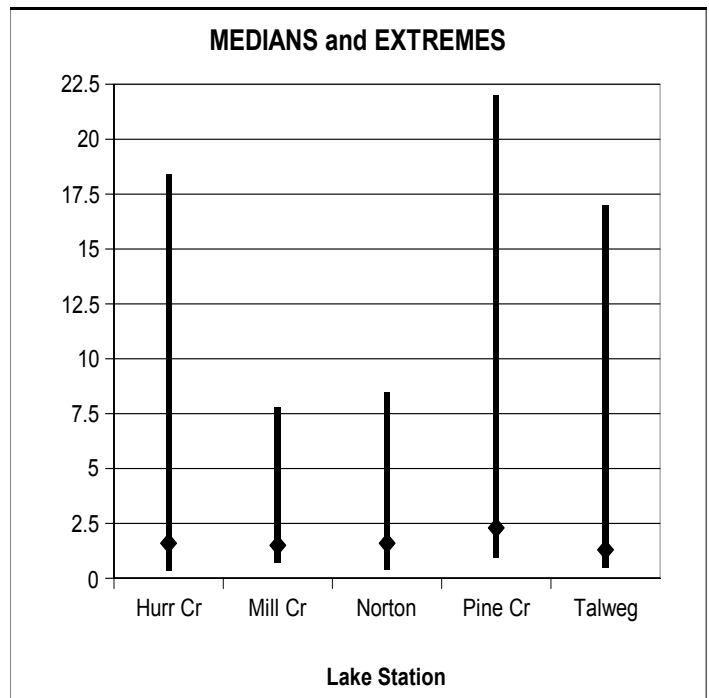


Figure 2. Median and extreme turbidity values of surface water samples from Lake Glenville during 2003-2005

Some information about the spatial patterns of turbidity in surface water of Lake Glenville is given in Figure 2, which shows the range and median value of about 25 measurements at each of several stations. "Talweg" is a station in deep water off Mill

(Continued on page 7)

Lake Glenville Water Quality 2: Counting Nephels Continued

(Continued from page 6)

Creek. The creek stations are located well into the four major arms of the lake but far enough from the end of the arm to provide depths of about 25 feet. The median values at each station are the most meaningful. As might be expected, Hurricane creek, Mill Creek, and Norton Creek are about 25% more turbid than the Talweg station, but Pine Creek is more than 75% more turbid. The extreme maximum values at all stations were observed in the wake of hurricane Ivan in 2004, and probably show the worst case under present circumstances. I recently measured a turbidity of 39 NTU for a surface water sample from Lake Okeechobee.

The time spanned by my nephelometer measurements is still too short for interpretation of secular trends, but it is a standard measurement that is made from time to time on Lake Glenville also by staff of the North Carolina DENR Department of Water Quality. They sample several deep-water sites in summer, but at irregular times, depending on funding level. Currently they visit us at five-year intervals, the most recent being in 2004. Instead of using samples from specific depths as I do, they use a sampler that collects a mixed sample of water from the euphotic zone, estimated as from the surface to twice the Secchi depth. Figure 3 shows results of their measurements since 1988. The most striking feature of this data series is the increase over all previous years observed in 2004. All of the sampling was done prior to the hurricane passages of 2004. The lowest of 12 turbidity measurements in 2004 was equal to the highest of 4 measurements made in 1988, the highest previously observed. This increase reflects the substantial decrease of Secchi depths in recent years shown in my contribution to the winter *Newsletter*. It was the doubling of turbidity from 1993 and 1994 to 1995 that originally piqued my interest enough to start measurements. By 2004 turbidity had more than doubled again.

So far this series has dealt only with turbidity of surface or near-surface waters of the lake. Next time around I will move on to the interesting things that occur out of sight in the depths of the lake, which of course are revealed only by nephelometric measurements.

Acknowledgements: I want to thank Eva and Anders Hansen, Keith Dixon, Bob Larson, and Nancy Tatum for assistance in the data collection process. Debra Owen kindly provided the data from NCDENR.

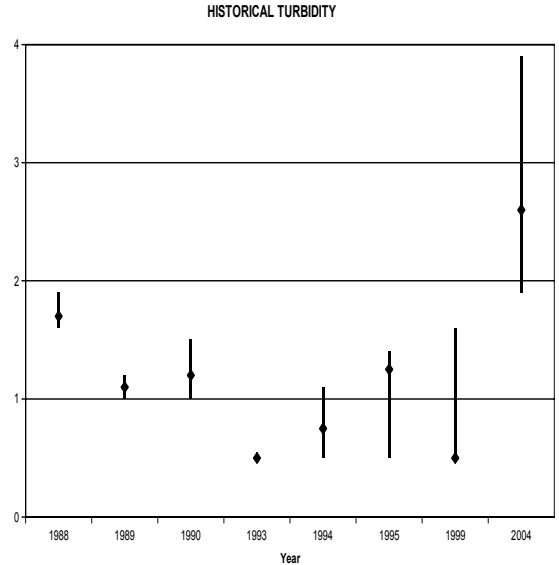


Figure 3. Median and extreme turbidity values of euphotic zone samples from Lake Glenville since 1988

FLG Board Retreat



FLG Social Calendar

Debbie Rankin, Social Chairperson

Come and join us for breakfast on the 3rd Saturday each month at 9am from May through September at The Landings at Trillium. Meet old friends and make new ones. The programs are usually speakers on current lake issues, along with updates on Friends of Lake Glenville activities and information. Our Grand Summer Social will be on Lake Glenville at the Lake Club on July 29, featuring a cocktail buffet. This is shaping up to be a great summer with lots to do and lots of fun!

Save these dates:

FLG Breakfasts

May 20

June 17

July 15

August 19

September 16

Grand Summer Social

July 29

On a brisk winter weekend in late February, the Board of Directors of your Friends of Lake Glenville convened at lakeside to contemplate the future direction of the group and to set up the social events, community service opportunities, water quality monitoring, and fund raising and membership programs for the upcoming summer season.

All of these activities and endeavors will succeed only with YOUR help. Please call any Board member or event coordinator to volunteer your help or email "flg28736@yahoo.com".

Why Do The Friends of Lake Glenville Care About Relicensing?

Often the officers and Board members of The Friends of Lake Glenville are asked why we are concerned about the Duke Power relicensing application. We care because certain provisions that Duke has asked for could dramatically effect Lake Glenville itself, property values around the lake, and all of the people who currently enjoy Lake Glenville recreation. Below we list some of the concerns and the differences between Duke and FLG in the hope that everyone can better understand this very complicated process:

Issue	Duke Power Position	Friends of Lake Glenville Position
Shoreline Leases	Lakefront property owners have no control of property on the lake side of the Duke 3110 line (buffer zone). In addition to Duke controls on cutting trees, vegetation, etc., this property can be used by anyone for picnics, parties, or any other purpose.	Duke Power and lakefront property owners need to continue their partnership on the management of the buffer zone property which has included shoreline leases from 1986 until recently. Duke desires that the property be preserved for ecological and wildlife concerns, and property owners insure that the property is not used inappropriately and keep the area maintained and attractive within the scope of the Duke regulations. If anyone can use the buffer zone property for any purpose, lakefront property owners have a lack of privacy and security, and it could lead to excessive noise and inappropriate behavior in a property owner's front yard. Duke grants leases to lake associations, marinas and certain other developer entities fostering a policy that is discriminatory to single family property owners.
Lake Levels	Duke Energy is willing to stipulate maximum and minimum lake levels but is unwilling to commit to specific lake level targets that they would attempt to maintain. The Duke standards do not reflect concern for shoreline erosion or lake access issues they create for property owners with unusually high or low water levels.	Friends of Lake Glenville realize that heavy rains or periods of drought will require that lake levels fluctuate up or down to control water flow. Duke Energy should, however, agree to try to maintain a mid-point level to prevent as much erosion and sedimentation as possible and maintain water depths for navigation over the entire lake during the spring, summer and fall seasons.
Water Releases	Duke Power plans to schedule seven water releases into the Tuckasegee River each year designed to accommodate Class IV and above kayakers. This means that during the releases, the water will not be used to generate power, and water levels will rise considerably down stream on the Tuckasegee River, effecting downstream property owners and fishermen. These releases may also have a noticeable effect on Lake Glenville water levels.	Friends of Lake Glenville is against water releases that will only benefit a few Class IV and above kayakers. The releases will impact lake levels seven different times each year. They will also affect those who now enjoy a "peaceful" Tuckasegee River. In addition, it diverts an important water resource to a few kayakers when it could generate electricity used by all in the community. There is also concern that the initial seven releases could be expanded to several more releases each year, having even more dramatic affect on the uses of Lake Glenville and the Tuckasegee River.
Public Recreation	Duke Power plans to spend \$100,000 to construct a trail to High Falls to accommodate kayakers during water releases on the Tuckasegee River. Duke has no plans for any other improvements to boat ramps or Andrews Park to improve recreation for other groups.	Friends of Lake Glenville feels that any money spent on public recreation should benefit larger numbers of people. The seven water releases a year benefit a small number of highly skilled kayakers. A \$100,000 expenditure for this trail is excessive. The money would be better spent at Andrews Park where more of the public could enjoy the expenditure all year long in improved recreation facilities. In addition, the proposed trail is over tough terrain which would pose a safety hazard to all who use it, both boaters and rescuers if needed.
Debris and Fallen Trees	Duke proposes no movement or cleanup of fallen trees or other debris in the water in front of the buffer zone or on the shoreline. They feel this serves the best interest of the fish habitat and other wildlife issues.	Friends of Lake Glenville also want to promote fish habitat and wildlife areas, but not at the expense of safe navigation, safe swimming, and the potential creation of fire hazards. Trees may be a hazard when they are just under the surface or when they fall near docks, compromising safe docking and swimming. Dry, dead debris and trees at the shoreline can also create a fire hazard to neighboring homes and buildings. There needs to be a more reasonable approach to handling fallen trees and debris at the waterfront.

THE DUKE-NANTAHALA RELICENSING CASE:

APRIL 6, 2006 UPDATE

1. *Watching and waiting for the Draft EA*

The ball has been pretty much in the FERC's court since the fall. The FERC staff (and their outside contractors) have been working on the Draft Environmental Assessment for the East Fork and West Fork projects and trying to figure out how to deal with competing offers of settlement (our Preferred Settlement Agreement (PSA) and the Duke TCST Agreement). The expectation is that the Draft EA should be published soon although there is no way of knowing when. In any event, FERC is now a full year behind the Staff's original schedule from July of 2004 that called for the Draft EA to be published in April of 2005. Following publication of the EA (whenever that occurs), **the next major step in the process** will be an opportunity for public comment. I would anticipate a comment period of no less than 45 days, which will provide time for FLG to review the Draft and then develop and implement a strategy for responding, depending on what is proposed.

2. *Update on including ex parte filings in the public record.*

As you recall, there was a concern that the Commission's Office of External Affairs last fall had classified as "nonpublic" some filings (letters of FLG support from Congressmen) and the Chairman's replies to the filing. On inquiry, I discovered that this practice of allowing this office to classify some of these docketed materials as non-public had begun in late 2003 and is, of course, directly contrary to the Commission's regulations. In March, after having received no response to a November letter to the Staff, I finally notified Commissioner Brownell and the Chairman's Chief of Staff of this anomaly and urged them to take steps to ensure compliance with the Commission's rules that require such ex parte communications be disclosed to the public. Early this week I received a letter from the Office of External Affairs thanking me for bringing the concern to the Commission's attention and indicating that any documents incorrectly classified as non-public would be reclassified as public (with such personal information as "home addresses, home phone numbers, personal e-mail addresses and other

personal information" being redacted). While protecting the integrity of the decisional record in our case, this has also, I believed, emphasized to these two commissioners and their staff our concerns over helping the Commission protect the integrity of its own decisional processes more generally, which is particularly important at the present time in light of current criticism of the Chairman and the Commission's handling of totally unrelated, quite controversial proceeding, which is stirring questions on Capitol Hill and in the press.

3. *Related developments of interest.*

Jackson County's efforts to obtain the new instream flow studies in the event the Dillsboro Dam is retained. Jackson County has also been endeavoring to obtain the new instream flow studies apparently done during 2005 (I believe). The County understands that these studies (or at least preliminary results) indicated that the appropriate flows required in the event the Dillsboro Dam were retained are materially less than previously believed. Hence, the County has tried to obtain these study result, but without success (having formally requested them by letter of February 10, 2006 to which no response had been made as of March 24). It is not entirely clear to me whether these studies have been completed or not. What appears clear (based on what I am told by Jackson County Relicensing Attorney Mr. Paul Nolan) is that the indications are that the results are believed to be significantly different than those previously discussed. Instream flows are directly related to possible water releases from Lake Glenville and therefore accurate studies are imperative.

REMINDER:

All pleadings and other documents filed with or issued by the Commission may be accessed over the web at:
<http://elibrary.ferc.gov/idmws/search/fercensearch.asp>,
inserting the docket P-2686 in the appropriate search field.

FLG Summer Raffle Re-deux Continued

(Continued from page 1)

Lake Glenville members will be asked to purchase a minimum of five tickets to support the fund drive.

This year's raffle operating committee will be directed by Vice President Helen Cook. The operating committee as well as the ticket sales committee, under the direction of President Carol Adams, will be introduced at the May breakfast. Ticket sales will include corporate sales and sponsorships, working with neighborhood captains to solicit ticket sales from residents around the lake and general sales to the community. Proceeds

from the 2005 raffle totaled over \$25,000. Our goal for 2006 is to double that amount. With the help of all of our members and our energetic committees we should have no problem reaching our goal.

We can always use fresh ideas and more volunteers. Anyone interested in volunteering to work on the raffle should contact Helen Cook or Carol Adams. Helen can be reached at 904-321-2210 or . Carol Adams can be contacted at 828 743-1658 or friendsof lakeglenville@yahoo.com.



FRIENDS OF LAKE GLENVILLE
2006 Membership Application

____ New
____ Renewal-No Changes
____ Renewal-With changes

For renewals only: DO NOT COMPLETE THE DATA INFORMATION IN SECTION A UNLESS THERE HAVE BEEN CHANGES SINCE 2005. PLEASE INDICATE THE STATUS OF YOUR MEMBERSHIP IN THE UPPER RIGHT HAND CORNER, THEN CONTINUE WITH SECTIONS B THROUGH F OF THE APPLICATION.

Today's Date: _____

Name(s): _____

A) Lake Address: _____ "Home" Address: _____

Phone(Lake): _____ Fax(Lake): _____ Email (Lake): _____
Phone (Home): _____ Fax(Home): _____ Email (Home): _____
Lake neighborhood name and/or general area: _____
Lake 911 address if above is PO Box: _____

B) Mail all newsletters and other correspondence to ___lake address or ___home address (choose one only for whole year).

Type of Resident: ___Seasonal or ___Permanent

C) Membership type: _____ Voting* \$45 annually _____ Associate \$45 annually

*Voting member(s) is/are property owners and/or registered voters within one mile of the lake or within Hamburg Township.
Associate members live outside the voting member area but have an interest in the lake.

Sponsorships: ___Bronze (\$100 - \$199) ___ Silver (\$200-\$299) ___ Gold (\$300 and up) ___ Other (contact FLG President)
All Sponsorships include: 1 Family membership, FLG decal, acknowledgment in a future newsletter and on the FLG website

D) Please rank the following FLG programs and projects on a scale from 1 through 10 according to your level of interest (10=high interest; 1=low interest)

___ Member recruitment ___ Newsletter ___ Social events ___ Community beautification
___ Water/boating safety ___ Relicensing ___ Fund raising (i.e. Post Office Garden)
___ Lake/shoreline law enforcement ___ Water quality ___ Sedimentation/Erosion ___ Political/legislative

I am interested in being on a committee ___yes ___no. If yes, which committee(s)? _____

E) Please indicate an FLG activity interest group you might like to enjoy with other FLG members.

___fly fishing ___lake fishing ___ hiking ___excursions ___golf ___tennis ___boating ___paddling ___cards ___dinner club

F) Form of payment: Check: Check No. _____

Credit card: ___ VISA ___ MasterCard [Other cards cannot be accepted at this time.]

Account # : _____ Exp. Date: ___ / ___

Cardholder (print): _____ Signature: _____

Mail completed form with check or credit card information to: Friends of Lake Glenville
P.O. Box 493
Glenville, NC 28736

* Dues must be received one month prior to Annual Meeting (July 5, 2006), in order to vote at the Annual Meeting on August 5th, 2006.



FRIENDS OF LAKE GLENVILLE

SPONSORS

2006



We appreciate those members who choose to be gold, silver or bronze sponsors. At this writing thank you to these generous members. The list will be updated in future issues.

Gold Sponsors

Howard and Colleen Austin
John Chaffee
Karen Scarbrough
Craig and Denise Dubow
Robert and JoAnn Gray
Bob Guerin
Rick and Charlotte Kuntz
Legasus of North Carolina
Seth and Glenda Marshall
Mary Pichan
Michael and Sandra Radke
Tom and Susan Turner
Diana Walker

Silver Sponsors

John and Paulina Cassidy
Dan and Carrie Donovan
Barry McGriff
Mac and Libby McGriff
Tom and Jean Robinson
Jim and Deborah Tenney

Bronze Sponsors

Russell and Nancy Albers
John and Sheila Bareham
Rich and Pat Becherer
Mike and Ann Bober
Dave and Lee Bowman
Joe and Denise Crowell
Jane Ebberts
Frank Esposito
Miles and Colleen Gottlob
Neil and Nancy Jean Greiser
Ernest and JoAnn Guise
Travis and Lise Hain
Don and Eva Hansen
Kenneth and Sheryl Hodge
Lambert and Joy Hooper
Bobby and Virginia Johnson
Kevin and Ann Killilea
John and Kathy Kirts
David and Lynn Leach
Neal and Bernie Love
Richard & Sheila Macfarland
Danny and Lisa May
Mountain Lake Properties

Mountain Realty of Cashiers

Bruce and Cinda Neurohr
Ralph Nichols
Edwin Nunnery
Angela Parrish
Ben and Jeanne Powell
Davis and Judy Rembert
Douglas and Linda Sampsel
Bob and Zannie Scheel
Roger and Mary Earle Scovil
Canie and Lynn Smith
Brian and Shana Smith
Doug and Virta Stepleton
Ron and Barbara Taylor
Oscar and Emilee Towler
Ray Trine
Pieter and Carol VanArkle
John and Ellen Ware III
Susan and Daniel Witka
Daniel Woods

[Make a sponsorship donation and your name will appear here too.]

2006 ANNUAL DUES ARE NOW DUE

A REMINDER: To those who have not yet renewed their FLG membership for 2006, please mail in your application and check or credit card information today! Remember our fiscal year runs from January to December. Over the past few years our membership has increased. However, many lakeside residents

still do not belong, so our Membership Committee will again be working hard to add new members. We encourage you to renew your membership today (an application is included in this newsletter if you need one) and invite your friends and neighbors who also enjoy the lake and its amenities to join too. Keep in mind that Gold, Silver, or Bronze Sponsorships are tax deductible because of FLG's 501c3 status obtained last year.

Friends of Lake Glenville Board of Directors

Carol Adams President	743-1658	casolveit@yahoo.com
Helen Cook, VP		helen@lodgingresources.com
Howard Austin, Secretary	743-9494	hmaustin@mindspring.com
Joanne Lindquist Treasurer	743-1630	joanne_lindquist2002@yahoo.com
Sandy Bishop	743-1620	spbishop@earthlink.net
Debbie Rankin	743-0015	dcrankin@verizon.net
David Leach	743-1825	leachga@earthlink.net
Doug Odell	743-5079	dodell@juno.com
Richard Becherer	743-0686	richard-becherer@utc.edu

Jackson County Board of Commissioners

Jackson County Administration	
401 Grindstaff Cove Road	
Sylva NC 28779	
828-586-4055, 828-586-7506 fax	
Kenneth Westmoreland, County Manager	586-7580 (w)
Commissioners:	
Brian T. McMahan, Chairman	586-5451 (h)
Roberta Crawford, Vice Chair; District 1	586-2607 (h)
Conrad Burrell, District 2	586-4301 (h)
Joe Cowan, District 3	586-4328 (h)
Edwin H. Madden, District 4	743-9664 (w)

Jackson County government web site: www.jacksonnc.org
Jackson County general web site: www.main.nc.us/jackson/

Friends of Lake Glenville
P.O. Box 493
Glenville, NC 28736





Friends of Lake Glenville
PO Box 493
Glenville NC 28736

FIRST CLASS

Friends of Lake Glenville

Spring2006



On the web: www.friendsoflakeglenville.com