

# Friends of Lake Glenville Lake Glenville



## Annual Meeting draws large member turnout!!

*The Annual Meeting on August 5, was called to order by President Doug Odell. The current Board of Directors and Officers were introduced. The minutes of the previous Annual Meeting were read and approved. The Treasurer's report reflected a positive financial condition with income from dues of \$5515., Sponsor contributions of \$6827., and advertising, \$12805. Our "Sundowner" is revenue neutral. And our Clothing Program is revenue neutral with paid for inventory of \$1600. Our largest expense, postage and printing, totaled \$7800.*

*With positive direction from the members at the previous Annual Meeting the Board met and established a program for increasing membership, enhancing communications, and expanding our programs.*

*The work started by adjusting our financial structure which included setting up sponsor categories and the addressing the membership program. Both activities have been successful. Over 30% of our members are sponsors. And this level of response has made a difference in the way we can approach our programs.*

*The membership program started with Colleen Gottlob assembling a 1300 name, lake, and near lake owners, mailing list. Our 1999 fall newsletter went to this general mailing. With continued emphasis on membership all year, our membership has almost doubled to 315. Membership will be a continuing effort.*

*Our enhanced communications are obvious with many improvements in our newsletter. Many thanks to Keith Dixon for our "attention getting", four times a year, newsletter additions. The formatting, content, stuffers, printing, and pictures have all added to keeping our members well informed.*

*Communications have also been enhanced through the Member Breakfasts at Happ's. Many thanks to Happ and the staff at Happ's for providing a pleasant way to get together to meet others from around the lake, and to hear first hand "What's Happening".*

*We had 160 reservations for the Sundowner and the enlarged Trillium facility to expand into. And it was a glorious day to enjoy the lake.*

*We had planned to provide a water safety course. Two water safety courses were held. We met our commitments to provide for personal watercraft certification training for the teenagers. The plan is to provide this service again next year.*

*The logo clothing program set up by Roy Morris is off to a good start and is being carried forward by Bill Cassidy. We have top quality and useful*

*items. This program also gets our image out to the public.*

*The water quality program is being enhanced to include taking monthly "grab samples" of inflow water for lab testing. This data will provide a numerical basis for comparison (see story).*

*Gil Bannerman has volunteered to implement a program whereby "Boat Friendly" information will be placed in all rental houses and units around the lake.*

*Many thanks to our retiring Board members, Roy Morris and Ralph Moore. Their time and effort has been greatly appreciated.*

*Three members were nominated for the Board of Directors. Elected were Jackie Cochrane, Doug Odell, and Jim Zoller.*

*Our speaker this year was Mr. John Wishon from Nantahala Power and Light. Mr. Fred Alexander, Operations Manager, also provided comments. The topic was FERC relicensing and its ramifications. John provided the outline of the procedure being followed, a list of specific requests and request for studies to be conducted, and the current status of relicensing. Fred commented that of our 315 members, only 10 letters were received.*

*NP&L will hold a working meeting in late October to review a consolidated plan of studies to be conducted by NP&L. All those that submitted written comments will be notified of the meeting. NP&L received over 300 requests for studies. None of the requested studies dealt directly with power generation. The requests were ecologically and recreation oriented relative to power generation operations.*

*Originally, licensing hydropower generation was an electrical power generation, rate setting and safety decision. Over the last 20 years the decisions have been opened to public comment for many kinds of concerns. Such national organizations as American Rivers, and American Whitewater can exert powerful influences.*

*The Friends of Lake Glenville comments and requests were printed in the summer newsletter, and FLG will be represented at the October meeting.*

*There are two big issues that will impact the lake area. There is a powerful request for water to be released into "by-pass" from the dam to the power house. And there are numerous requests for more water to be released to enhance downstream recreation. Both requests will impact water usage and lake levels. Your help, individually and working together, with these issues will be needed over the next five years.*

## Thoughts from your outgoing Editor.....Keith Dixon



**Q. After just 2-3 years as editor, your stepping down. Why?**

**A.** Need more time to fish!.....(kidding of course). I will still be available as a consultant to the board and to the new editor.

**Q. Explain that!**

**A.** We have found that communications are very important and sometimes members are reluctant

to approach the BOD. I may be more accessible with more time to listen to folks' concerns. I also feel I can provide the BOD with fishing and wildlife information since this is my passion.

**Q. In your tenure, what do you feel were the best accomplishments of the FLG?**

**A.** It has been exciting! Through the efforts of a few people, this organization has come from a "reactive" to a "proactive" group that tackles future issues before they become "panic" action items. Specifically, I have to commend the efforts of those that brought the infra-structure of FLG to a "level of excellence": people like Ralph Moore, who conceived the idea of "member breakfasts"; Roy Morris, who single handedly involved the commercial community with our effort; and Mary Dixon who computerized our membership data base and treasury. Without these basic thrusts there would have been no foundation from which to grow and fund the worthy causes of the organization.

**Q. And the newsletter?**

**A.** It has come the first step, from basically a "president's report" to something that approaches a good communication effort. But please remember that the ability to move the newsletter on to the next level was the infra-structure improvements that I just mentioned above. In two years FLG has come from a net worth of \$5000 to \$30,000. But, this, in itself, is far short of what it will take to keep our Lake Glenville a "national treasure". There are many public and private ventures that could "doom" this lake if given the chance.

**Q. Well then, what are FLG's problems?**

**A.** I don't perceive them as problems, but rather challenges! By far the greatest challenge, is leadership succession planning. FLG needs to seek out new and energetic human resources to lead us in the next millennium. That's sounds simplistic, but if you don't have a good continuous flow of capable leaders coming through "the chairs", basic continuity fails. I support the idea of a "two year term" for all major officers, and I think the positions of treasurer, editor, and/or secretary would be valuable for a good future president.

Furthermore, I think it is imperative that BOD avoid the "activity trap" and listen very closely to its constituents and what is on their agenda, rather than dwell on the past or what accomplishments have been achieved in previous years.

**Q. Why would a person want to serve as FLG Board of Director or officer?**

**A.** Because FLG needs you, and it has a wonderful future cause for our next generation. FLG needs energetic people who will bring fresh ideas and a commitment to the organization's charter, commitment to clean water, safety for everyone using the lake, preservation of the wildlife, and constant lake levels.

**Q. What in your opinion should the FLG, Board of Directors do in the future?**

**A.** Dream.....Prepare.....Assemble a team.....Go forth and lead.....Overcome obstacles.....Find truth.....and Share knowledge.

**Q. What was your biggest "kick" out of serving?**

**A.** Developing the FLG logo! One member asked me why we needed a logo. I replied that it we badly needed an "identity". He still doesn't understand!

**Q. Who's going to take over as FLG newsletter editor?**

**A.** Howard Austin, a lake front property owner, who will, I'm sure, take the newsletter to a new level of excellence.

**Q. And you will just fish?**

**A.** No....Mary has one more year as a FLG director and I'm sure she will want some help....and I have offered to lead the FLG into the internet world by developing a web site that will further our communication effort. And I want to be there, to make sure we don't fall into the "activity trap".

# Water Quality Report.....Doug Odell

FLG water quality was expanded this year by working with the Water Quality Institute at UNC-Asheville. Once each month we sample seven in-flow locations for chemical and silt analysis. This data gives us an improved picture of our major incoming water sources.

Volunteers collect 250 milliliter samples at each site, and an on site data form is completed for each site. Samples are delivered to Asheville the next day, and results are received by e-mail. UNC's lab receives over 200 samples from the Asheville area each month.

Testing is done for nutrients such as nitrogen and phosphates; for heavy metals such as copper, zinc, and iron; for sedimentation; and acidity. Results have been typical for mountain creeks in their natural state: nutrients are low, even

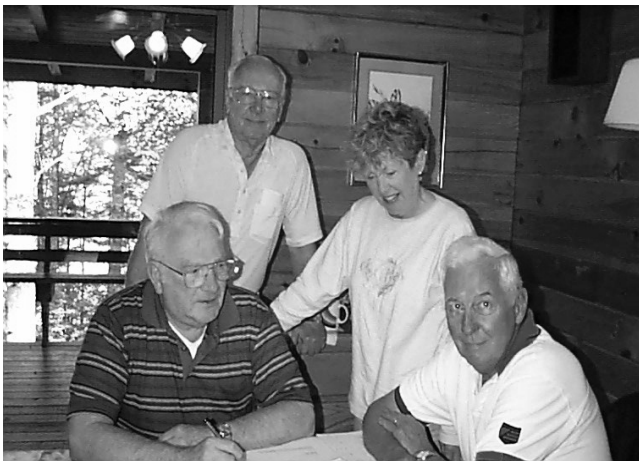
for a suspected sample site; and heavy metals are also low. At a pH of 6.5, our water is slightly acidic, with little reserve buffering capacity. Furthermore, we now have data to describe the silting problem.

TURBIDITY RESULTS			
Location	June	July	August
Hurricane	2.1	5.2	4.6
Norton	5.9	55	6.9
Mill	5.7	75	26
Pine	5.6	140	6.8
Cedar	4.8	9	3.8
Glenville	12	31	7.4
Upper Norton	2.0	21	3.4

Even with a small number of samples, the following data describes what is happening in our creeks. As a guide to this data, trout breeding is impacted when the NTUs exceed 10. NTU refers to turbidity units. When the NTU reaches 6, the silting is barely visible, but an NTU of 10 is noticeable. At an NTU of 30 – 40 the water appears muddy.

The June sample reflects four to five weeks of dry weather, while July shows the results of a heavy rain (2—4 inches). The August weather was typical. Silting of creeks does not have to happen; all of this silt ends up in the lake.

## Calling for Member Talent !!



Shown here with President Doug Odell (seated on left) are John Scheidt (seated on right) and FLG Board members Neil Griesser and Mary Dixon

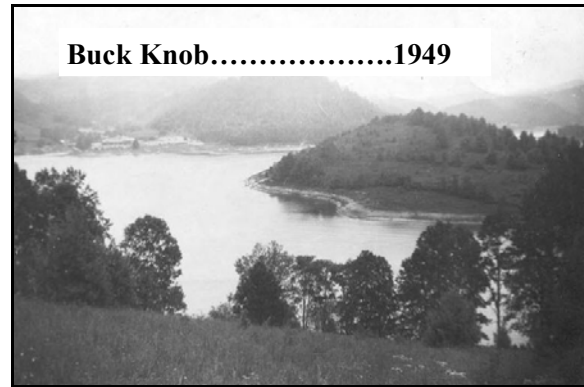
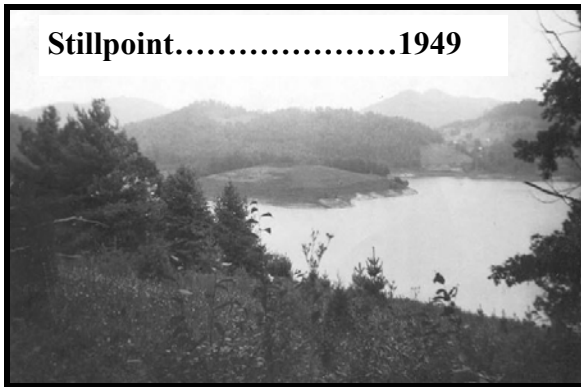
How much hidden talent and expertise exist within the Friends of Lake Glenville organization? Just recently your Board of Directors was privileged to have John Scheidt of Strawberry Hill attend an impromptu meeting on FERC issues.

Mr. Scheidt, now retired, is a former executive assistant with Florida Power Corporation. After thirty years in the power utility industry, John Scheidt provides the board with insight, and in depth understanding of the workings of power utility management.

Board members found his comments and suggestions for direction very helpful. Furthermore, it is our hope that we can continue to draw on Mr. Scheidt's knowledge.

**Note your new FLGOfficers on Page 8!!**

**At the September board meeting it was voted to establish a FLG web site. This web site will be assembled during the winter and throughout the year will go through many "construction" phases. It will be an "active" page with on-going event schedules, Lake Glenville facts, and information generally published in our newsletter, but on a more timely basis. Keep your eye out for: [www.friendsoflakeglenville.com](http://www.friendsoflakeglenville.com).**



*Do you know what these new Lake Glenville developments were in 1949???*  
*See Story on page 6*

### “Boat Friendly”

- ♥ *Be aware of, and obey, the North Carolina laws of boating.*
- ♥ *Personal watercraft (jet skis) should observe the rules like any other watercraft.*
- ♥ *Slow to 5 mph if within 200ft. of boats, swimmers, fisherman, or docks. When “in doubt”, slow down!*
- ♥ *YOU are responsible for the wake that your boat is throwing and should consider the consequences to others.(i.e. dock damage, capsizing small craft, and bank soil erosion)*
- ♥ *Always “give way” to (pass behind) non-powered boats such as sailboats, kayaks, canoes, and rowing craft. (200 ft. a good gesture).*
- ♥ *Ski and raft towing boats should never go beyond 100ft. of their disabled skiers and have an observer aboard as well as a driver.*
- ♥ *Keep noise within its proper perspective. Sound carries a long distance on water. Keep radios and recorders at a low volume.*
- ♥ *Pick up any “man-made” trash or litter you see floating in the water.*
- ♥ *Always stop and offer assistance to stranded boaters.*

*“Fishing is the chance to wash ones soul with pure air: with the rush of the brooks or with the shimmer of sun on blue water. It brings meekness and inspiration from the decency of nature, charity toward tackle makers, patience toward the fish, a mockery of profits and egos, a quieting of hate, a rejoicing that you don’t have to do a darn thing until next week. All of these put a discipline in the quality of men.”*

*Herbert Hoover*



**Sundowner Fun!! See page 8**

**Presidents Letter.....Doug Odell**

*Where did the summer go? With all the summer activities: boating, swimming, fishing, water-skiing, social affairs and cook-outs, the summer has vanished. But we have another glorious time of the year on the lake with leaves turning and crisp morning air. Many boat docks are empty and even a trace of wood smoke in the air.*

*Your Board has been at work laying plans for next year and addressing the NP&L re-licensing issue with its impact to the lake. There will be more water safety courses in early summer; the Sundowner is set for July 2nd; there will be breakfast meetings, owner association meetings; and the annual meeting will be August 4th. And, there probably will be some work sessions relative to our potential lake level and lake water usage issues.*

*The breakfast meetings have been well attended with time for lake issue discussions. Good ideas have popped up. There has been good feedback as to what's happening around the lake. These informal "get togethers" help me to keep pace and up to date with current lake issues. And, I've had a chance to meet more of my neighbors.*

*With passage of the Watercraft legislation, the publicity and effort by Wildlife Enforcement, severe craziness of watercraft operation appears to have decreased. Yes, there is still room for improvement particularly around swimming areas. And yes wakes from all craft are damaging the shoreline, docks, and boating equipment. But the wild craziness and crowding of other water activities has improved.*

*Have you noticed the lake levels staying up. For fourteen years we have tried to get the lake level up. And now with the increased boating activity and heavy wakes the shoreline is taking serious erosion. Please watch your wakes, give the shoreline a little more room, and "Boat Friendly".*

*If you have had occasion to phone in power line trouble lately, you may have noticed that the trouble call was answered in Charlotte. Be sure you give your 911 address. More and more Charlotte seems to be getting closer.*

*If you have changed your phone service - check to see that 911 still has your current response directions. It appears that if you change or upgrade your phone service your response directions may be deleted.*

*Have you let our advertisers know that you have seen their ad. They like to know that their ads*

*are effective. And, we like their being happy that they did advertise with us. These funds will become increasingly important to us to carry our message of lake level, and lake water usage to those that make the decisions.*

*Late breaking news. In addition to the working meeting to be held by NP&L in October, there will be a series of working meetings called by a representative of the NC Department of Water Resources. The intent is to find a workable solution to the water usage issue to present to FERC. FLG will be represented.*

*We need your help and your expertise. The requests for water to flow in the by-pass and for more water downstream are real challenges. And it CAN happen - for the next 50 years. We can use many talents.*

*If you have dealt with this type of situation or even a similar situation; if you have connections with US Fish and Wildlife, US Forest Service, NC state water agencies or elected officials: if you can help putting presentations together, and giving presentations; we need your expertise. We need legal, technical, and graphics talent. Please contact me. Use phone, e-mail or letters. Phone number after 1 November is 865 690 1865.*

*There are several inserts with this newsletter. One is to let you know of our membership and sponsor program enhancements. The other insert is a shoreline survey to be completed and mailed back. Information you furnish for this survey will be kept confidential. It is important for us to know the status of these activities. Please help us. Complete the survey and mail it back today.*

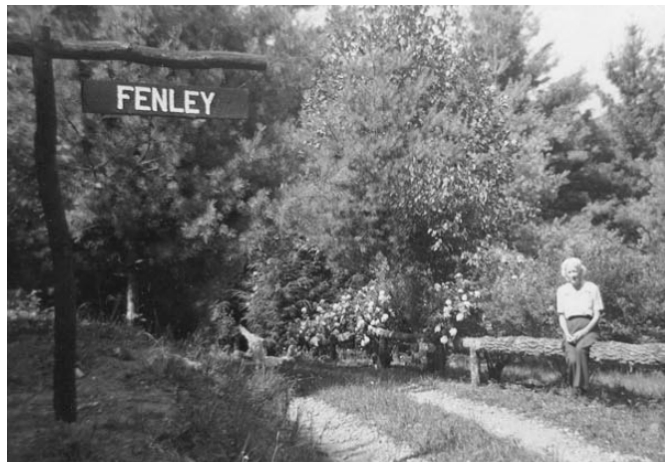
*FLG EXCLUSIVE CLOTHING line has arrived and is ready to ship to the discerning buyer. Introduced at the Paris, Rome, and New York designer shows, FLG clothing was the hit of all three shows.*

*The 100% cotton, variety of shirts and cap in this season's warm colors are enhanced by the most wanted embroidered logo in the fashion world. Too exclusive for Rodeo Drive, Seville Row, and Park Avenue, the FLG clothing is available only with the enclosed order form. You may also look for the high fashion boutique at FLG events.*

*Wear it proudly, for your purchases show you to be supporter of the FLG activities. And for your car or boat there is the FLG Logo fashion plate. Call*

## Reflecting on a Quieter Time.....Mary Dixon

*There was a time, a quieter time, when no speed boats or PWCs buzzed about resembling itinerant wasps; when one could swim or even bathe, remember "Ivory soap floats", without fear of being decapitated; and when background noise was the sound of a loon, not a cacophony of chain saws. The year was 1948, the time when Faye Person Fenley, her older sister Afleeta Belle Person Liles, and their younger brother, Benjamin V. Person, purchased several acres at the end of Fenley Forest Trail.*



*the lake in a 14 ft. boat, luggage and all. As Rutledge tells us, "It paid to pack lightly". Leaving early on a foggy, dark morning was always an adventure.*

*The second home to be built in Fenley Forest, 1949-1950, is now the Weatherby house, and the next home constructed is now Summer Song Farm's Caretaker's house. A few large hardwoods grew*

*on the property, and some small Pines, Beech, and Poplar, but for the most part the land was clear, and the views unobstructed.*

*And to those who first settled Fenley Forest, Buck Knob Island was referred to as "Goat Island". Its owner kept a number of goats as well as an occasional cow. The livestock all wore small bells around their necks, serenading the settlers with trilling bells from early morning until dusk. Fifty years ago Stillpoint was cleared to the ridgeline and used for crops of cabbage and corn. On Friday nights when this owner, a bus driver, returned from a trip, his car lights could be seen, and he would sound his horn signaling his return: an oddity back then as there was so little traffic.*

*Aunt Faye made many wonderful friends, without whom she could not have survived her summers here, leaving a wonderful legacy for her family. She was instrumental in helping develop the area and during her final summer on the lake, her neighbors gave a party in her honor. She single handedly saw to the building of dirt roads, surveying of lots, and the introduction of electricity. She was up at daybreak, and in bed as the sun went down. Always in touch with current events, she was a lively conversationalist sharing her opinions with her friends and neighbors.*

*Let your imagination run for a few moments: what would it have been like to spend a weekend with Aunt Faye? Up at dawn, coffee watching the sun rise, then down the road to collect vegetables and visit with the neighbors....maybe later a swim in the lake, sitting on the porch for the sheer enjoyment of the lake and mountains, later a simple supper and drifting off for the night on the sleeping porch. What do you suppose Aunt Faye would think of us, and how we spend our time on her beautiful lake?*

*(Many thanks to Rutledge Liles for sharing his family history and love for this lake, and for keeping his portion of Fenley Forest a treasure.)*

*Today if you were to sit down with Aunt Faye Fenley, great aunt of Rutledge Liles and part-time resident of Fenley Forest, she would share memories of a very different landscape, when bigger wasn't necessarily better, when a dirt road was a luxury, and electricity was yet to come. Aunt Faye, "Little Brother" Benjamin V. Person, and their sister, Afleeta Belle Person Liles, called the property Highhala, "High" for the altitude and "Hala" taken from Nantahala.*

*The Fenley-Liles home was constructed in 1949; its original dimensions were 30 ft by 30 ft.; it had no insulation and of course no telephone or other "customary" amenities of today. Water was drawn from a small spring about 100 yards from the house. The spring also served as a place for refrigeration for several years; milk, butter and other perishables were placed in the spring run-off. And until plumbing was installed much later, water used for sanitary purposes was carried in buckets from the spring, and as mentioned earlier, baths were taken in the lake. Aunt Faye had no car; she traveled from Miami to Cashiers early each June by Greyhound bus. Upon her arrival someone would pick her up and take her to her cabin where she would remain until late August. She had no communication system; Mr. Monteith would row across the lake with her mail. Most of her provisions came from Mr. and Mrs. Baumgartner's farm, which later belonged to the Coggins family, and recently was purchased by Ron and Robin Elbon. The Baumgartners had no car either, but occasionally took Aunt Faye "to town" with them in a horse drawn wagon. Rutledge Liles has special childhood memories of learning to milk a cow with Mr. Baumgartner, and riding his mule.*

*When Rutledge and his parents visited Fenley Forest they left their 1946 Hudson automobile parked on the grounds of the old Glenville School, and rowed across*



## Miss Vicki's..... Local Glenville International Business !!

*When you purchase a beautiful Fraser Fir wreath for the holidays in Florida, or even Atlanta, it's quite possible that it had its origins right in our own backyard, Glenville!*



*Nestled off Lakeside Circle Drive, and in view of Lake Glenville, Miss Vicki's Holiday Fixin's, becomes a virtual bee hive of activity from mid November until Santa finally loads his sleigh on Christmas Eve.*

*Miss Vicki's isn't just a new upstart either; long time residents of the area, Tom and Vicki Sawyer, started this business in 1985. During peak production time they employ over forty people, many of whom are earning extra cash for their own Christmas. Miss Vicki's has an in house supply of greenery which is supplied by Tom Sawyer Tree Farm and other local growers.*

*What makes this particular wreath business different is its focus on quality. Vicki Sawyer and her manager, Debbie Cole, won't begin production in October as do many other wreath makers in North Carolina because they know such wreathes will lose freshness before reaching the buyer.*

**Mail in your 2001 dues with handy return form!  
Now!!!**

*"We take every measure to ship the freshest product available and our entire production process is based on this premise", comments Vicki Sawyer. She continues, "The trees are cut the day of use, and only the culled trees' full, top branches are used. Immediately after assembly, the wreathes are dipped in a moisture lock solution and hung in dark, high moisture storage rooms." Per year, forty thousand pounds of greens are used to make over five thousand wreathes as well as garland, and are shipped to forty-eight states: as far north as Canada, and south to the Virgin Islands. Generally wreath sizes range from 15 inches to 32 inches, but often the firm is challenged to provide large, custom wreathes up to 6 feet in diameter.*

*In addition, emphasis on quality continues into the shipping phase of the business. Debbie Cole comments, "We prefer to ship on Monday and Tuesday so that the product does not spend the weekend warehoused in the shipping depot." The largest shipping day, the Monday following Thanksgiving, one may very well observe a UPS tractor trailer winding down this small country lane.*

*Orders vary from one to eight hundred wreathes with destinations to churches, charities, and youth clubs that sell the products for fund raising purposes. Many wreathes are also sold locally at the Tom Sawyer Tree Farm "choose and cut" lot, and also at the Tom Sawyer tree lots in Florida. Last year they produced enough garland to reach from Glenville to Cashiers, over twenty five thousand feet!*

*Off season you will find Vicki Sawyer donating her time and talents to the Cashiers Rotary and Chamber of Commerce; or lending a hand at another Sawyer business in Glenville, Mountain Party Tent Rental.*

## "Boat Friendly" signs in progress-More Water Safety courses!

*According to FLG director, Jim Anderson, design for four boat ramp signs is in process. Construction should be completed so that these signs will be ready for installation in early spring, 2001.*

*Each sign will be approximately 3 ft. x 4 ft. and supported with 4 in. x 4 in. posts. The signs will display all "Boat Friendly" information as well as the new Personal Watercraft (PWC) law. The existing signage is faded and inconsistent with the new law.*

*As our lake continues to have more traffic, the new signs should be most helpful to boaters coming from other areas or who are new to the area.*

*With regard to water safety, Anderson reports that Wildlife Patrol Officer, Brent Hyatt, encountered only one lake accident during the season: two people were involved, one of which was operating a PWC; a citation was issued.*

*Most folks on the lake are more aware of the new NC personal watercraft law and this resulted in a safe boating season, even with the increased lake usage this year.*

*FLG will once again provide boat safety courses in 2001. Office Hyatt will review all "Rules of the Water" for boaters; and 12-16 year olds PWC users will be able to obtain the certification now required by state law. These course dates will be published in a future newsletter.*

**Sundowner.....July 2, 2001**



*The FLG annual "Sundowner" social has been set for July 2,2001, at the Landings at Trillium, 5pm-7pm.*

**Bridge Construction Delayed**



*Good news: The bridge reconstruction won't be started until Sept. 2001*

*Bad news: The lake will be drawn down 27 feet!*

**Friends of Lake Glenville Board of Directors**

Director	Phone	e-mail	Term Expires
Doug Odell -Pres.	743-5079	dodell@juno.com	2003
Joy Hooper	743-5811	ABAGAILONE@aol.com	2002
Mary Dixon	743-4166	dixonk@gte.net	2001
Colleen Gottloeb-Sec.	743 1822	coleen@worldnet.att.net	2001
Jim Zoller	743-1020	jim@zollerhardware.com	2003
Neil Greiser	743-3900	mng@gte.net	2002
Phil Fowler	743-9230	(none)	2002
Jackie Cochrane- Trea.	743-9252	ncflamama@yahoo.com	200
Jim Anderson -VP	743-9476	zoom.bloom@worldnet.att.net	2001

**Factoid**

**30% of the FLG members have contributed to sponsorship dues status.**

**Please join them in this worthy cause.**

**See enclosed application form.**

**Additional Important Contacts**

County Sheriff-Cashiers 743-3333  
 Sylva 586-4355  
 Rescue Squad-743-3655  
 Corp of Engineers-828-271-4856  
 Land and Water Quality-251-6208  
 NC Wildlife-Brent Hyatt-293-3417  
 Jackson County Planning-Tamera Crisp 586-7575  
 NP&L-Richard Conley-828-369-4551  
 John Wishon(Relicensing) 369-4604

**Jackson County Board of Commissioners 586-4055**

*Stacy Buchanan-District # 3*      *Franz Whitmire-District# 4*  
*P.O. Box 332*                              *P.O. Box 98*  
*Webster, NC 28788*                      *Glenville, NC 28736*  
*Home-293-5236*                              *Home-743-3366*  
*Work-586-2177 x-210*

*Roberta Crawford-District# 1*      *Jay A. Denton-County Wide*  
*372 Brooks Branch Road*              *Chairman and County Manager*  
*Sylva,, NC 28779*                              *401 Grindstaff Cove Road*  
*Home-586-2607*                              *Sylva, NC 28779*  
     *Work-586-7580*

*Conrad Burrell District# 2*              *Fax-589-7528*  
*P.O. Box 201*  
*Sylva NC 28779*

**2001 Membership dues now being accepted!**  
**See application return form enclosed!!**